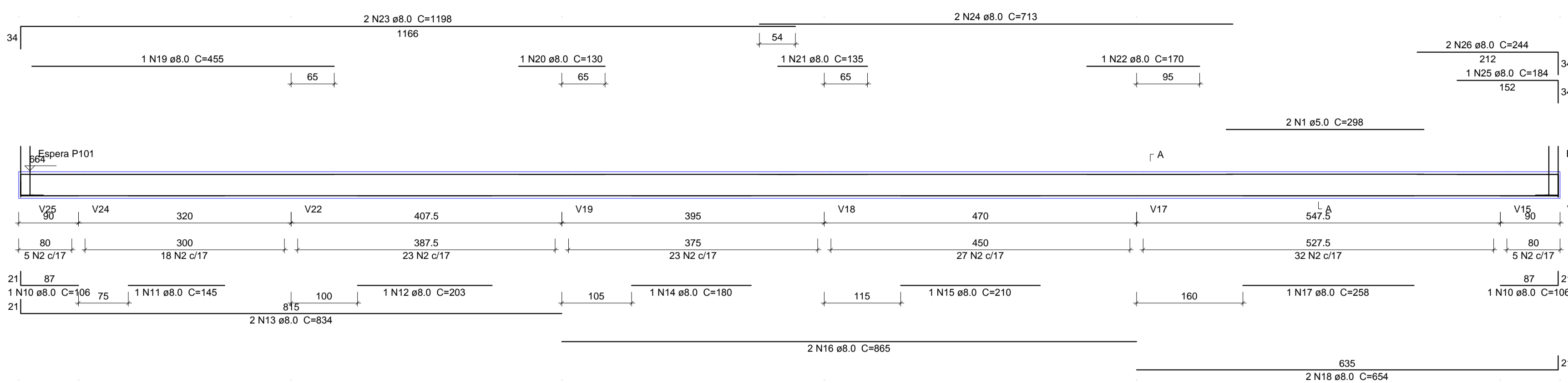
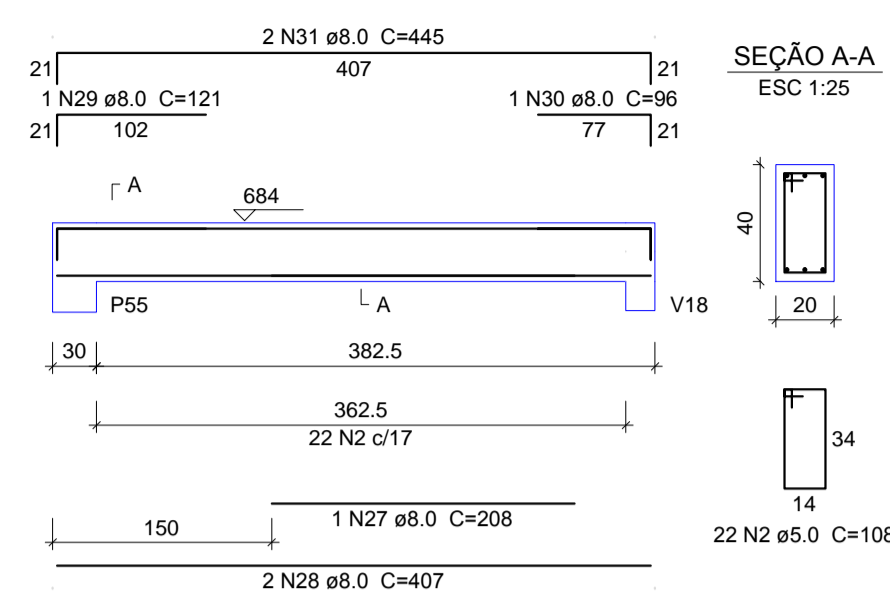


V27
ESC 1:50



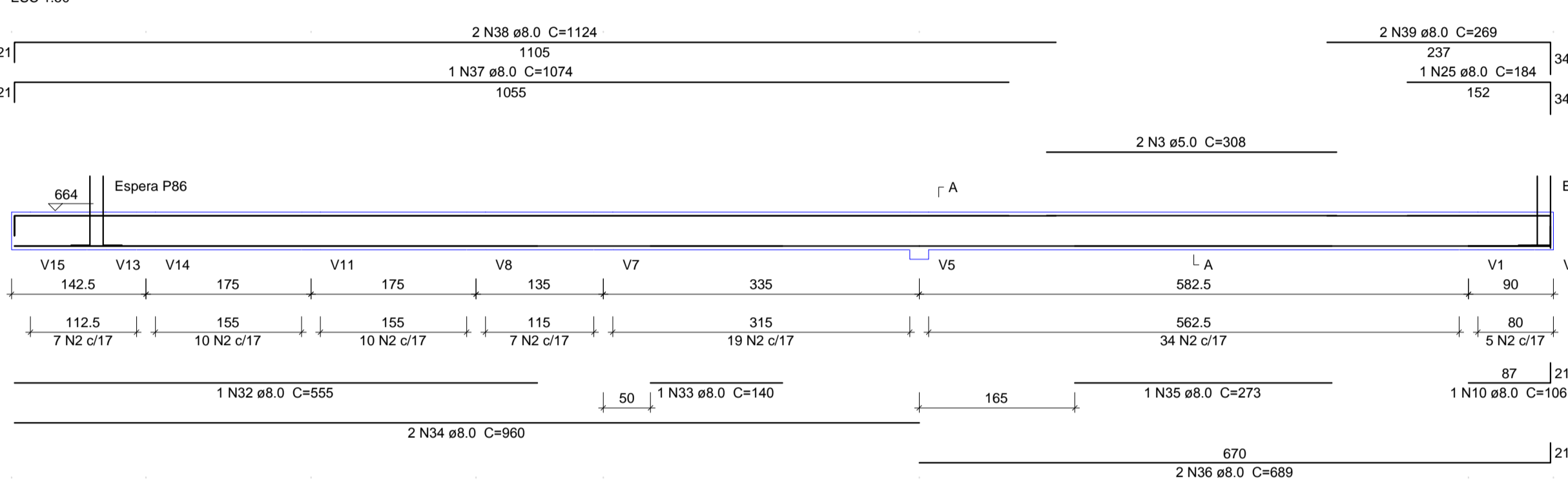
V42
ESC 1:50



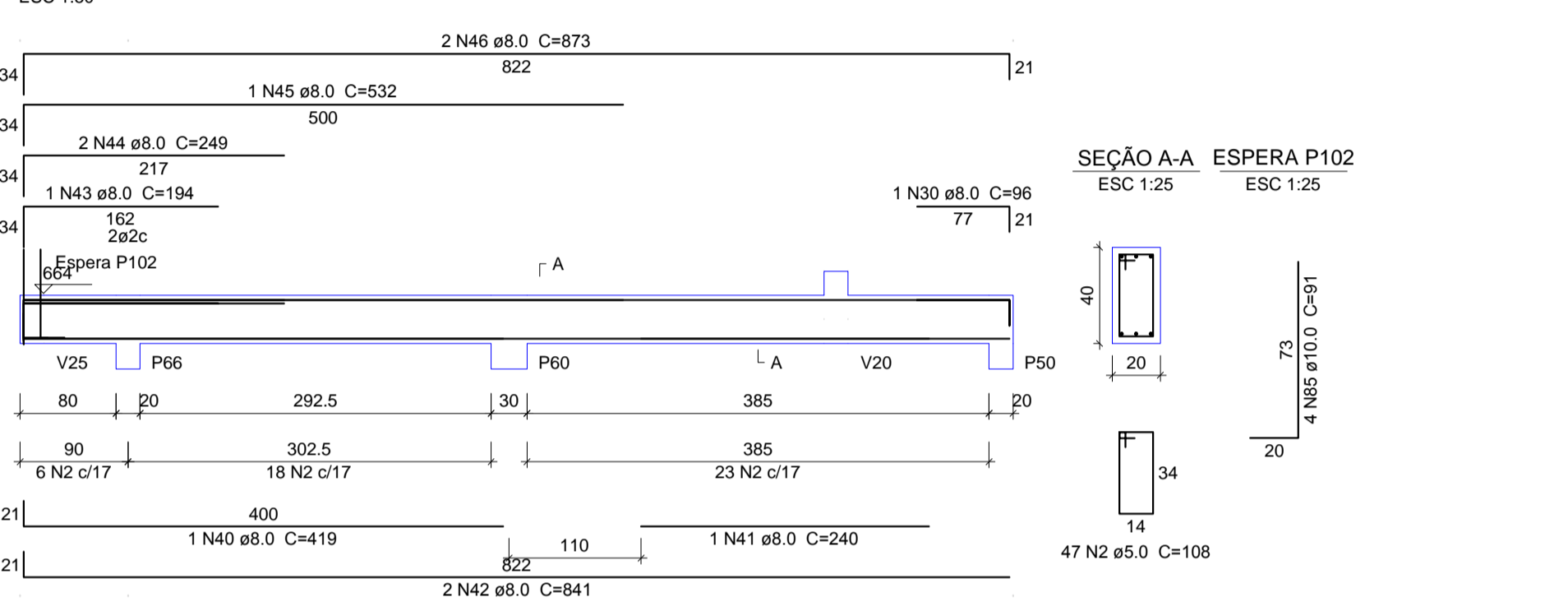
Relação do aço

ACO	N	DIAM (mm)	QUANT (Barras)	UNIT (cm)	C.TOTAL (cm)
CA60	1	5.0	2	298	596
	2	5.0	666	108	71928
	3	5.0	2	308	616
	4	5.0	2	238	476
	5	5.0	2	230	460
	6	5.0	2	313	626
	7	5.0	2	272	544
	8	5.0	2	350	700
	9	6.3	1	85	85
	10	8.0	5	106	530
	11	8.0	1	145	145
	12	8.0	2	203	406
	13	8.0	2	834	1668
	14	8.0	1	180	180
	15	8.0	1	210	210
	16	8.0	2	865	1730
	17	8.0	1	258	258
	18	8.0	2	654	1308
	19	8.0	1	455	455
	20	8.0	1	130	130
	21	8.0	1	135	135
	22	8.0	1	170	170
	23	8.0	2	1198	2396
	24	8.0	2	713	1426
	25	8.0	2	184	368
	26	8.0	2	244	488
	27	8.0	1	208	208
	28	8.0	2	407	814
	29	8.0	1	121	121
	30	8.0	8	96	768
	31	8.0	2	445	890
	32	8.0	1	555	555
	33	8.0	1	140	140
	34	8.0	2	960	1920
	35	8.0	1	273	273
	36	8.0	2	689	1378
	37	8.0	1	1074	1074
	38	8.0	2	1124	2248
	39	8.0	2	269	538
	40	8.0	1	419	419
	41	8.0	2	240	480
	42	8.0	2	841	1682
	43	8.0	1	194	194
	44	8.0	2	249	498
	45	8.0	1	532	532
	46	8.0	2	873	1746
	47	8.0	1	188	188
	48	8.0	1	450	450
	49	8.0	2	967	1934
	50	8.0	3	1005	3015
	51	8.0	1	220	220
	52	8.0	1	94	94
	53	8.0	2	696	1392
	54	8.0	1	516	516
	55	8.0	1	163	163
	56	8.0	2	849	1698
	57	8.0	2	245	490
	58	8.0	1	243	243
	59	8.0	2	1015	2030
	60	8.0	2	320	640
	61	8.0	1	131	131
	62	8.0	1	155	155
	63	8.0	2	646	1292
	64	8.0	1	434	434
	65	8.0	2	519	1038
	66	8.0	1	278	278
	67	8.0	2	1032	2064
	68	8.0	1	91	91
	69	8.0	2	156	312
	70	8.0	1	92	92
	71	8.0	2	152	304
	72	8.0	1	103	103
	73	8.0	2	162	324
	74	8.0	3	205	615
	75	8.0	1	170	170
	76	8.0	1	158	158
	77	8.0	2	704	1408
	78	8.0	2	347	694
	79	8.0	1	270	270
	80	8.0	2	507	1014
	81	8.0	3	119	357
	82	8.0	1	191	191
	83	8.0	2	263	526
	84	8.0	3	293	879
	85	10.0	28	91	2548
	86	10.0	2	214	428
	87	10.0	4	731	2924
	88	10.0	1	629	629
	89	10.0	1	619	619
	90	10.0	2	885	1770
	91	10.0	2	260	520
	92	10.0	1	239	239

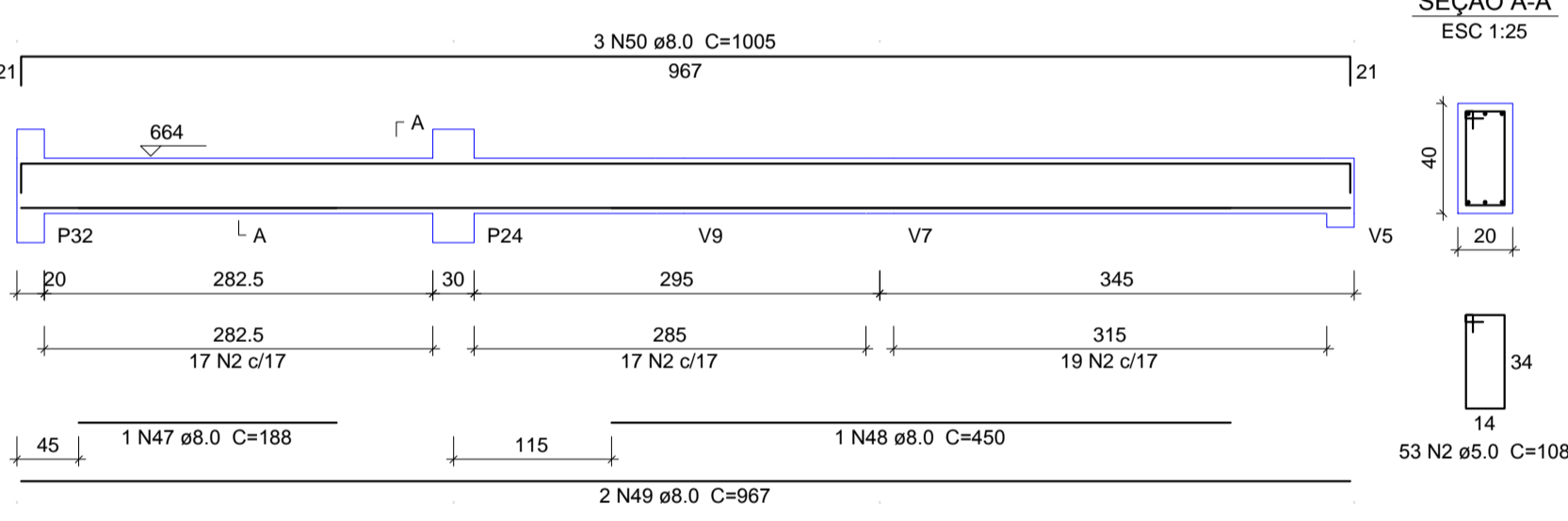
V28
ESC 1:50



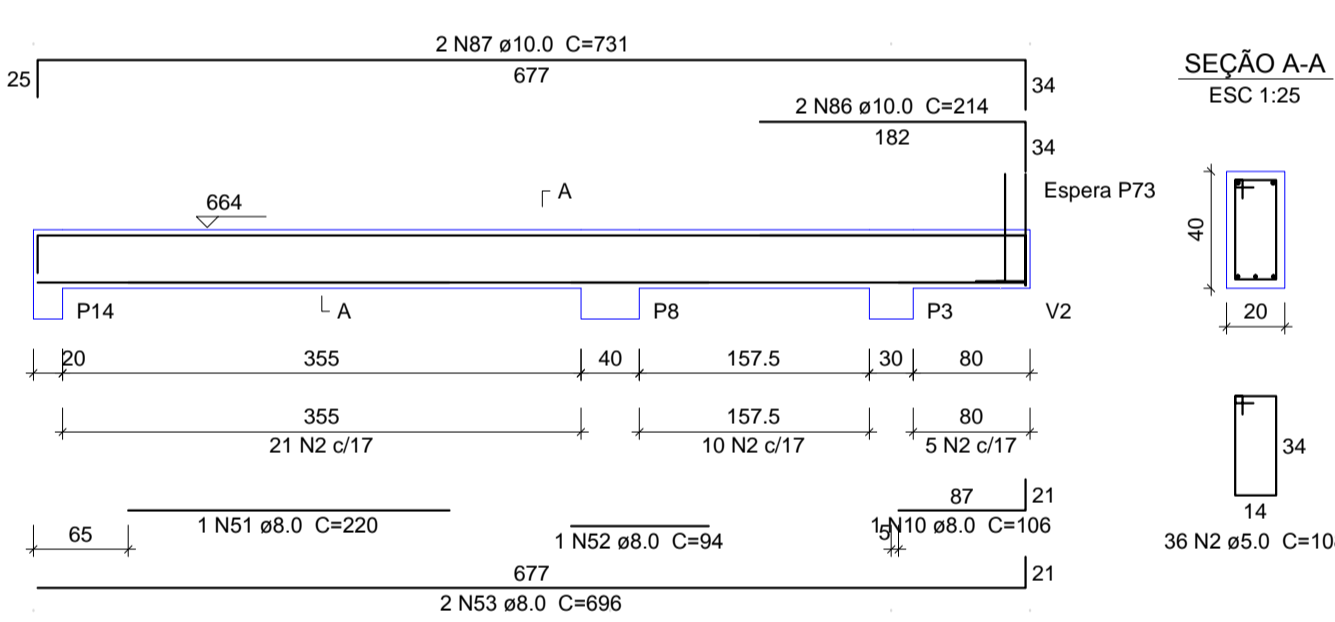
V31
ESC 1:50



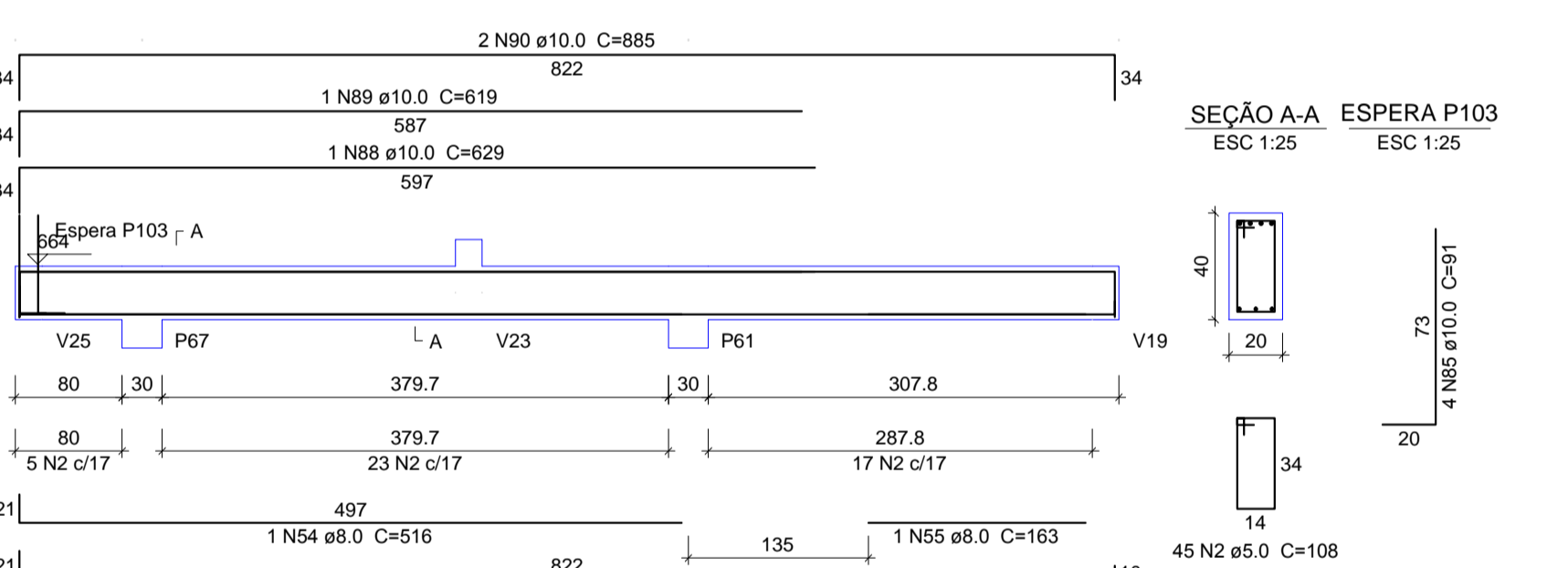
V33
ESC 1:50



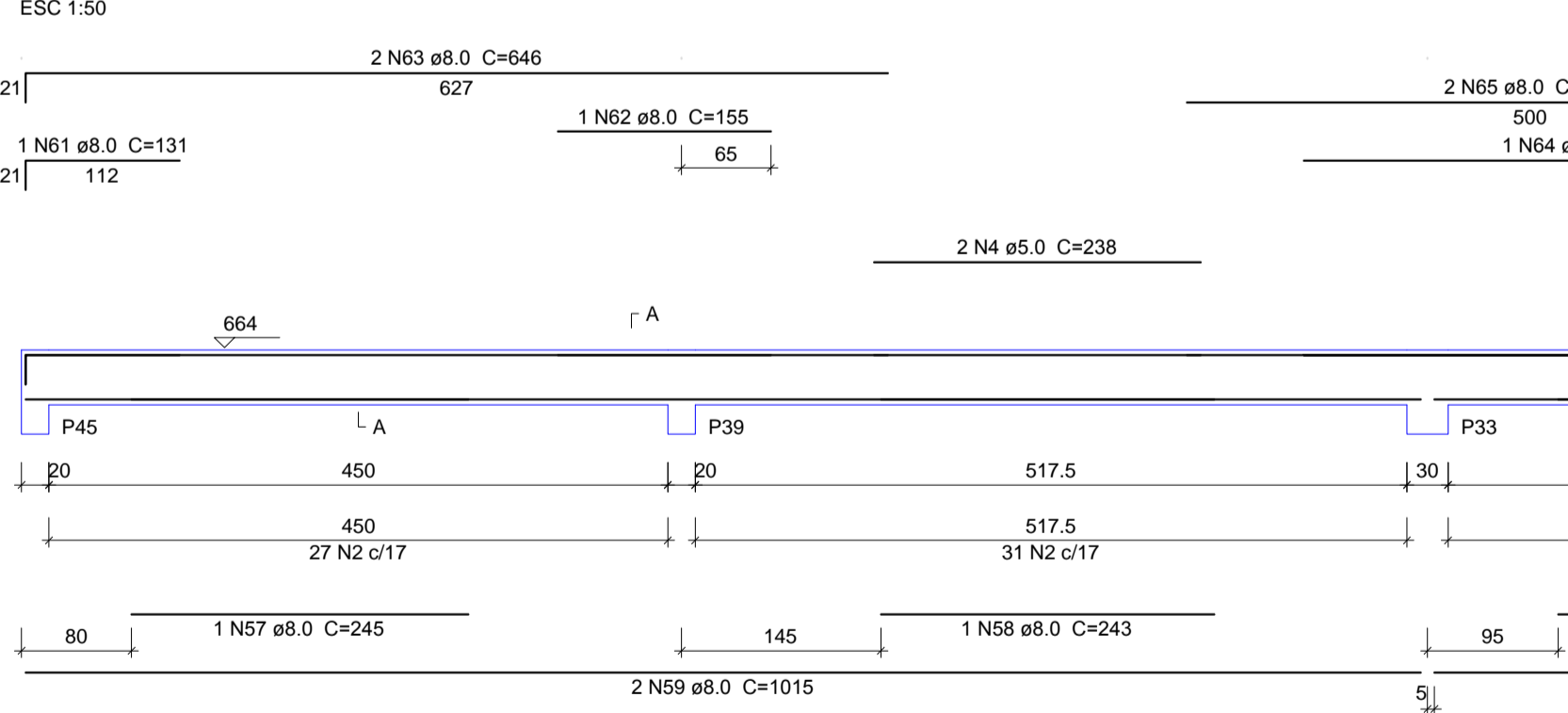
V36
ESC 1:50



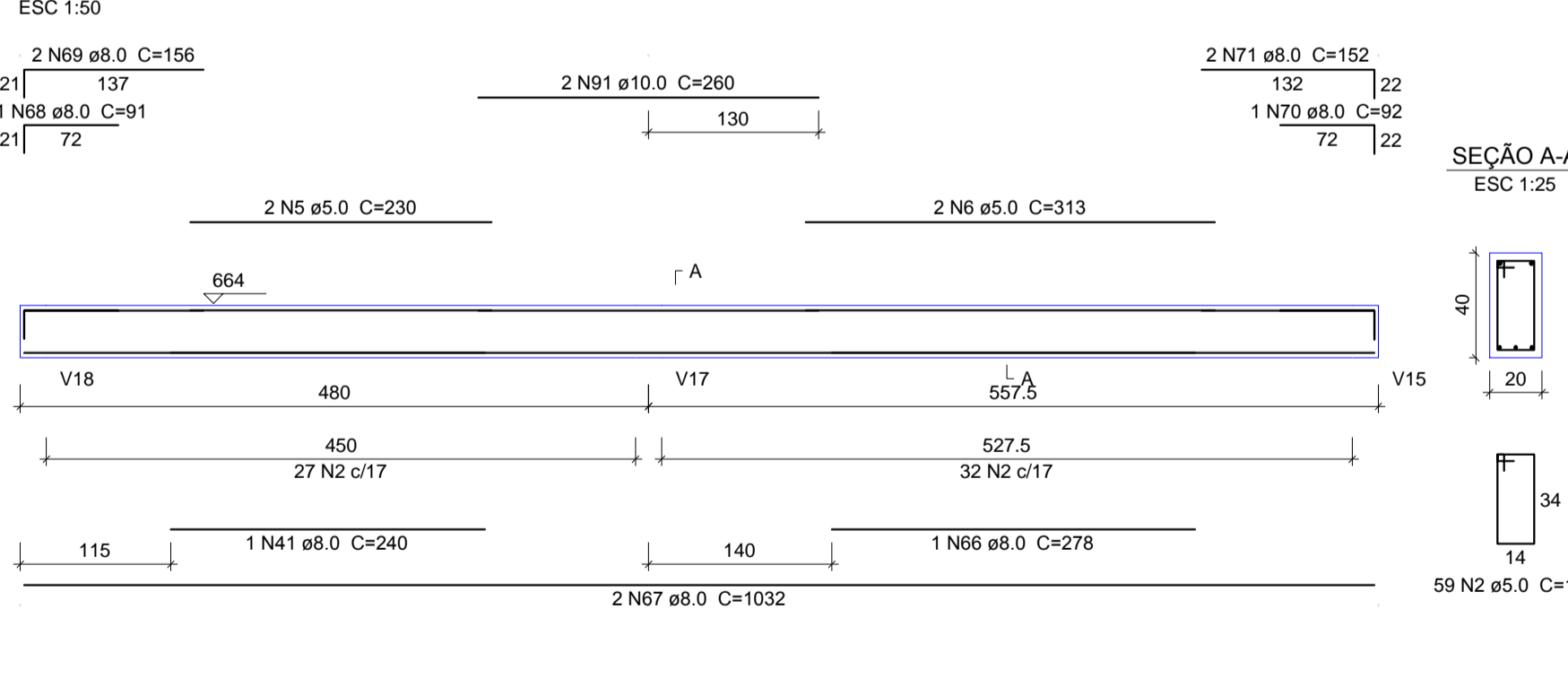
V37
ESC 1:50



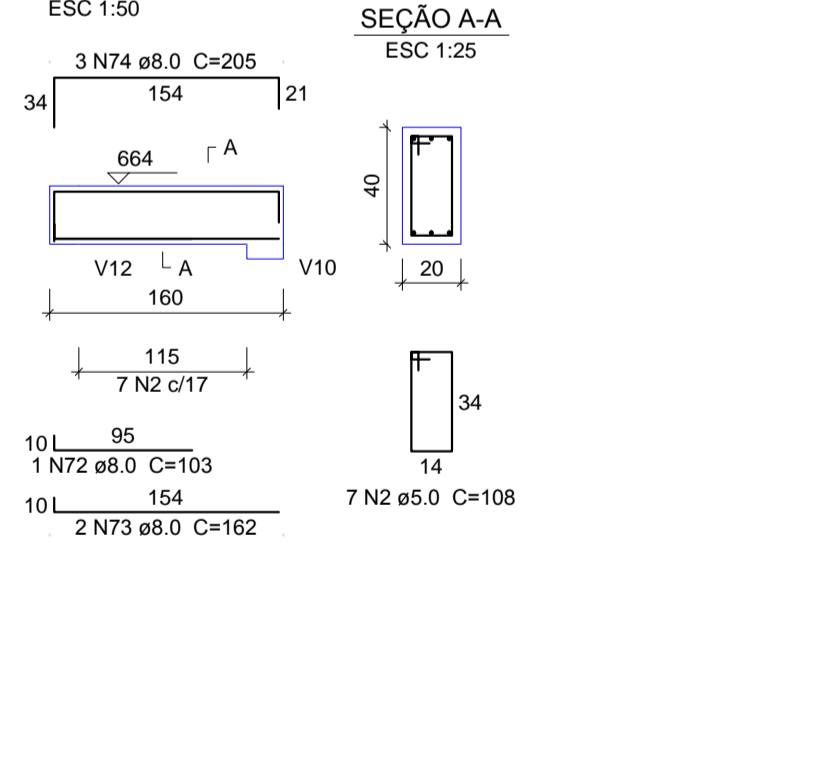
V38
ESC 1:50



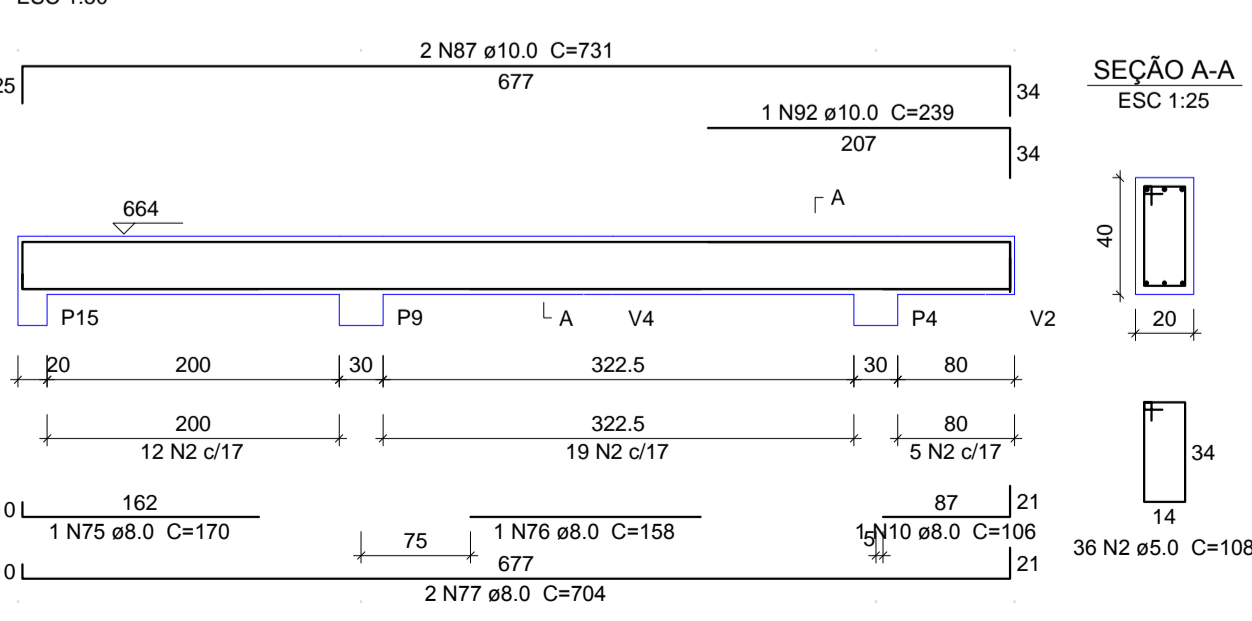
V39
ESC 1:50



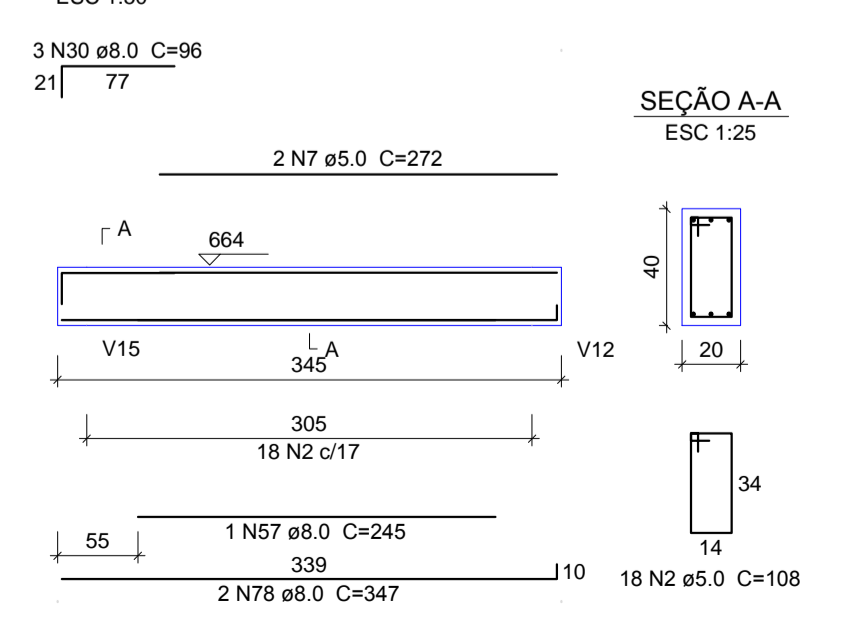
V45
ESC 1:50



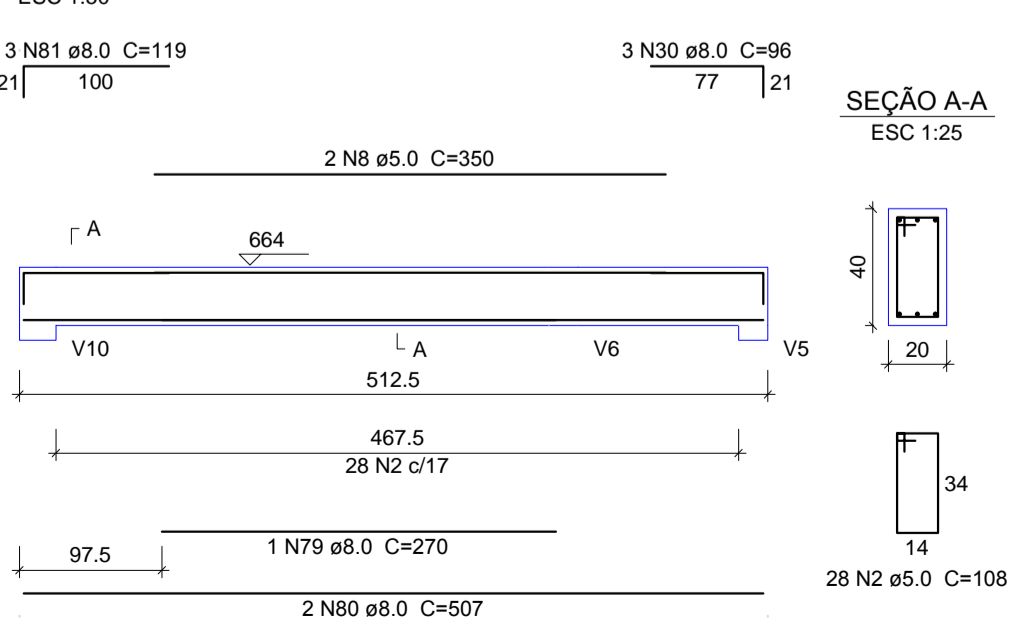
V44
ESC 1:50



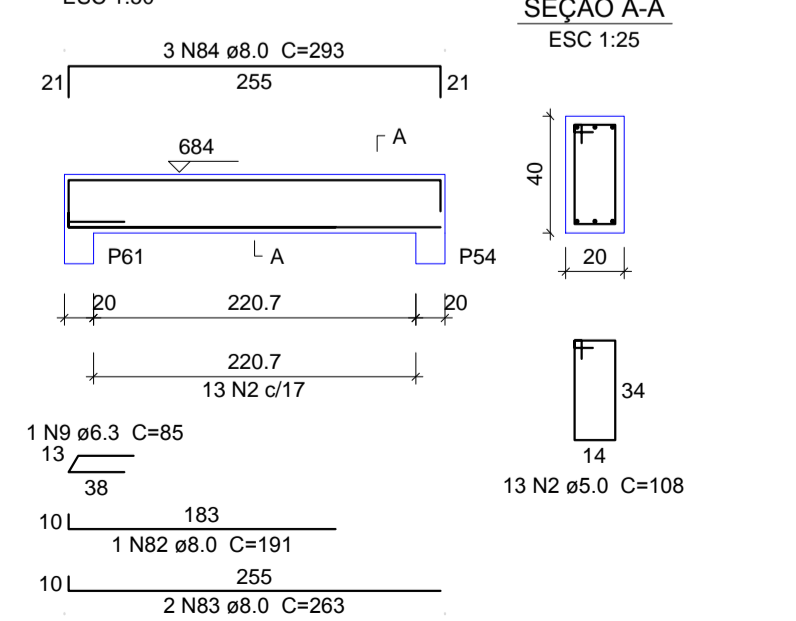
V47
ESC 1:50



V48
ESC 1:50



V54
ESC 1:50



Resumo do aço

ACO	DIAM (mm)	C.TOTAL (m)	PESO + 10% (kg)
CA50	6.3	0.9	0.2
	8.0	544.6	236.4
	10.0	96.8	65.6
CA60	5.0	759.5	129.8
PESO TOTAL (kg)			
CA50		302.2	
CA60		128.8	

Volume de concreto (C-30) = 9.62 m³
Área de forma = 120.26 m²



BERARDI ENGENHARIA & CONSTRUÇÕES LTDA.

Rua Capito Eteuterio, 610, Sala 406, Edifício Centro Executivo, Passo Fundo/RS 99010-060
berardiengenharia@gmail.com (54)3313.9870 - (54) 9994.0937
CNPJ: 13.425.382/0001-47

RESPONSÁVEL TÉCNICO: Jean Berardi Manica
CONTRATANTE: Prefeitura Municipal de Jóiá
Cnpj: 89.650.121/0001-92

PROJETO: FERRAGEM VIGAS LAJE DE FORRO 04

CONTEUDO DA PRANCHA: FERRAGEM VIGAS LAJE DE FORRO 04

ENDEREÇO DA OBRA: Rua Dr. Edmar Krueel - Nº 188 - Centro - Jóiá/RS

PROJETISTA: Jean Berardi ESCALA: 1/50 DATA: Agosto de 2017 ÁREA DO PROJETO: 1.139,11 m²

E-18